



MODULAR COLLECTION

KINGFISHER

feel at home

Specifications

Total Area	164.6 m ²
House Dimensions	12.6 m wide 20.0 m long
Minimum Site Dimensions	14.8 m wide 27.5 m long

**A HOUSE TO
CALL HOME**

Available in
TWO levels of
SPECIFICATIONS
contact me for
more info

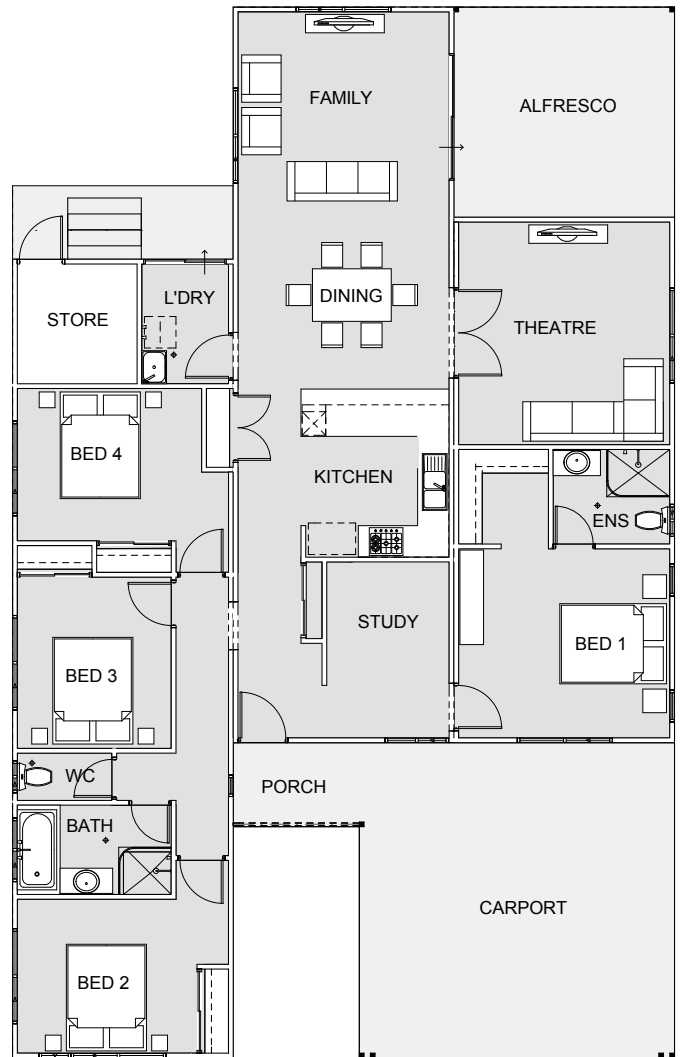




Image for illustrative purposes only

KEY KINGFISHER FEATURES:

- Central entertainment hub with open plan kitchen, dining and family room
- Separate master suite with ensuite and large walk in robe
- Private study area
- Minor bedroom wing
- Large store area
- Additional theatre opens onto entertainment hub
- U shaped kitchen with breakfast bar

ON THE MOVE

At Pindan Homes, we are passionate about what we do and committed to delivering innovative, cost-effective solutions for modular and transportable homes that provide unparalleled value for our customers.

We challenge conventional building principles and everything you know about functionality and building techniques by embracing innovation in the design and construction of modular homes. We use a blueprint that consistently produces low impact, high quality transportable homes without sacrificing aesthetics and style, offering a better lifestyle in the process.

At Pindan Homes, we use five key values to guide our modular homes, Perth-built and delivered to your site in WA.

- Environmental sustainability
- Innovative design
- Compliance and high building standards
- Enduring building materials
- Versatility in function, look and application.

Designed and built for comfort anywhere in just a matter of weeks, our transportable homes, kit homes and granny flats are manufactured to stringent Australian standards using high-quality materials with a strong focus on energy efficiency and sustainability.

FEEL AT HOME

Pindan Homes is one of Perth's leading independent residential home builders that is committed to designing great homes built with your lifestyle in mind.

For those looking for a truly unique custom home experience, Pindan Homes specialises in luxury bespoke home builds with a wealth of experience designing dwellings to suit difficult or narrow blocks. Our Elegant designs, together with our personalised client service and quality craftsmanship underpin everything we do.

QUALITY AND SERVICE

With an emphasis on unique structural design, clever building methods, quality finishes and fittings, and the use of new attractive materials, Pindan Homes continues to make its mark on the new homes industry in Perth and Western Australia.

With strong connections between interior and outdoor spaces, Pindan Homes are optimised for temperature and light control, power and water consumption and are constructed using sustainable methods and materials where possible encouraging natural flow and positive interactions.

Each Pindan Homes design incorporates ergonomic and smart design principles that suit modern lifestyles. Choose between our Aspire or Lifestyle specification levels and three elevations for each of our custom plans.

**IT'S ABOUT SPACIOUS FAMILY
LIVING THAT YOU FEEL AT HOME IN.**