

# BAYLISS

*feel at home*



### Specifications

|                   |                             |
|-------------------|-----------------------------|
| Ground Floor      | 177.43 m <sup>2</sup>       |
| First Floor       | 166.46 m <sup>2</sup>       |
| Garage            | 40.15 m <sup>2</sup>        |
| Alfresco          | 25.11 m <sup>2</sup>        |
| Porch             | 3.11 m <sup>2</sup>         |
| <b>Total Area</b> | <b>343.89 m<sup>2</sup></b> |

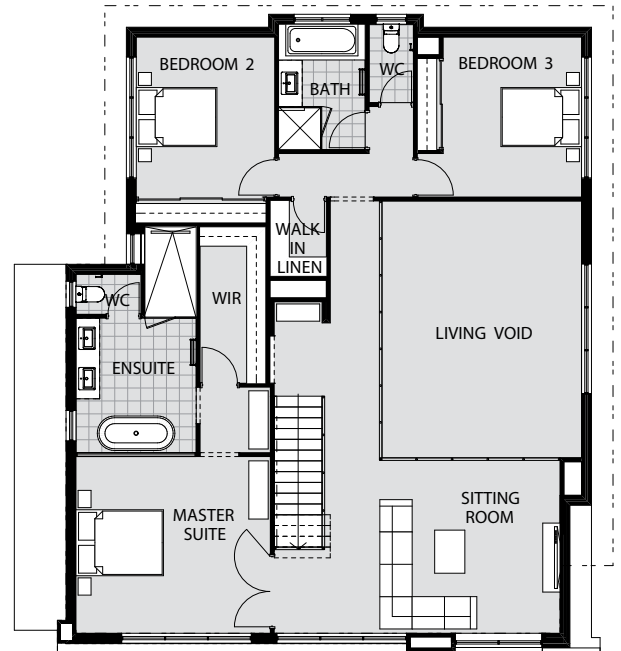
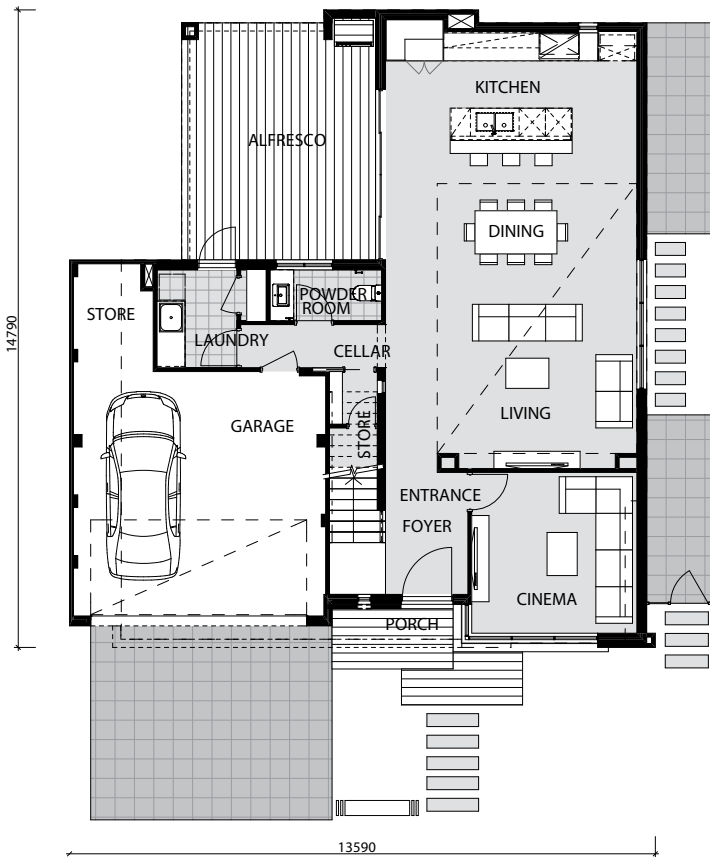




Image for illustrative purposes only



## FEEL AT HOME

Pindan Homes is one of Perth's leading independent residential home builders committed to designing great homes built with your lifestyle in mind. Our range of off-the-plan single storey and two storey home designs, including narrow lot homes, rear garage, and reverse living plans offers you a wide range of contemporary styles and configurations.

## BESPOKE BUILD

For those looking for a truly unique custom home experience, Pindan Homes specialises in luxury bespoke home builds with a wealth of experience designing dwellings to suit difficult or narrow blocks. Our Elegant designs, together with our personalised client service and quality craftsmanship underpin everything we do.

## QUALITY AND SERVICE

With an emphasis on unique structural design, clever building methods, quality finishes and fittings, and the use of new attractive materials, Pindan Homes continues to make its mark on the new homes industry in Perth and Western Australia.

Our floor plans are made with your lifestyle in mind with spaces adapted to accommodate changes in lifestyle and family size. With strong connections between interior and outdoor spaces, Pindan Homes are optimised for temperature and light control, power and water consumption and are constructed using sustainable methods and materials where possible encouraging natural flow and positive interactions.

Each Pindan Homes design incorporates ergonomic and smart design principles that suit modern lifestyles.

**IT'S ABOUT SPACIOUS FAMILY  
LIVING THAT YOU FEEL AT HOME IN.**